



32 SANSON  
by ROCKWELL



A NEW CHAPTER

32 SANSON  
by ROCKWELL



Artist's Illustration





Actual Photo of Rockwell Center



## A STORY OF BEGINNINGS WITH NO END

The conception of Rockwell is a tale of a unique first – a vision to create a different kind of self-sustaining community beside the metro’s busiest district made real. This was the beginning of our flagship development that would become a benchmark for living, leisure, and business.

For over 25 years, the Rockwell story has expanded through countless new chapters. But for every beginning we create in the form of exclusive and holistic communities, we also set our sights to the blank pages of where to go next.

For our latest chapter, we now look back to the story of 32 Sanson where a tale of firsts will be born for Cebuanos.





Artist's Illustration



## A FIRST FOR ROCKWELL AND CEBU

The birth of 32 Sanson marked yet another iconic first for both Rockwell and Cebuano. For us, our first foray into development outside Metro Manila was a monumental step for expanding our story.

For Cebu, this meant the birth of a special kind of community with that signature Rockwell style of living – a sprawling, low-density, residential garden development that was both a convenience for urban dwellers and a tranquil escape for the modern family.





Actual Photo

THE  
PROPERTY

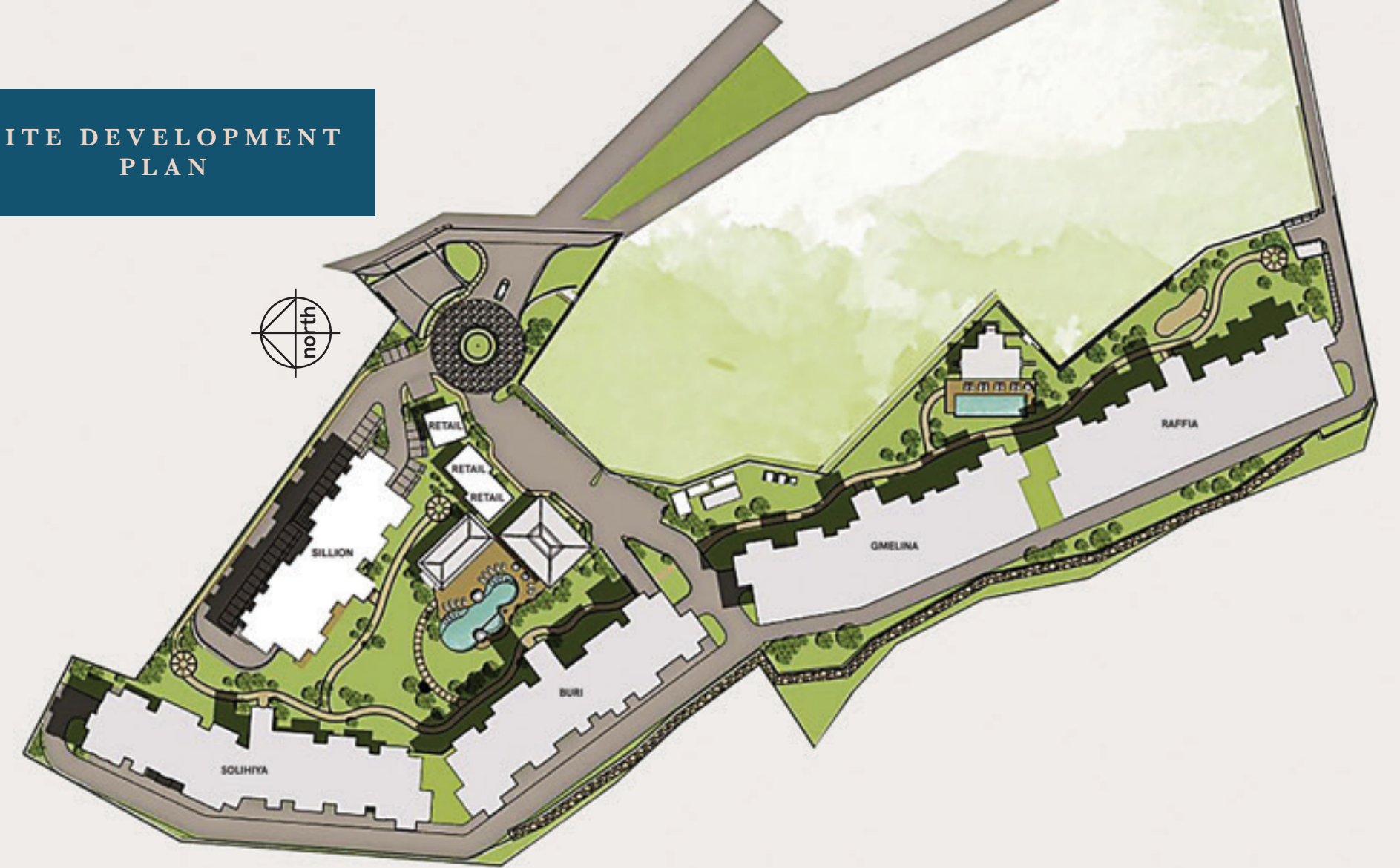




## FIND MORE FIRSTS AT 32 SANSON

There are new beginnings for you here at 32 Sanson by Rockwell. This charming garden development is over 70% open space and greenery – the perfect harmony of convenience by the city and the serenity of countryside living. Located in Lahug within the Queen City, 32 Sanson and its five towers are strategically placed near essential destinations like business centers, prominent neighborhoods, and amazing retail destinations to give you a rural escape in the middle of the urban landscape. Be at ease with Rockwell's dedicated Property Management team, knowing you can come home to a well-kept community best suited for nurturing your family.

## SITE DEVELOPMENT PLAN



## THE 32 SANSON LEGACY CONTINUES *family.*

Since its inception, the heart of Sanson has always been its residents and the countless stories they create. Together we have made a thriving, holistic community unlike any other in Cebu.

Each story begins at our five residential structures – Raffia, Gmelina, Buri, Solihiya, and Sillion. Here, residents will find themselves a stone's throw away from lush greenery, open walkways, and other comforts like retail pavilions.





Actual Photo

## THE AMENITIES







Actual Photo

## ADD COLOR TO YOUR STORIES

The priceless moments of watching your kids play and enjoy all the wonders of childhood, the cherished “me time” spent doing laps in a pool or those big gatherings that make fun memories – this is the lifestyle you deserve. This is also what 32 Sanson offers you from its myriad of amenities. From the intimate to the grand, from the relaxing to the unforgettable, it is here whenever you want.



Actual Photo



Artist's Illustration

## WE'RE BIG ON LIFESTYLE



Actual Photo

Amenities thoughtful enough for you to enjoy, generous enough to suit a community's needs. 32 Sanson has always taken pride in providing its residents with amenities that live up to their discerning standards. Our two pools are always welcoming for a loud splash or a quiet dip, but for those looking to enjoy the green outdoors more can take a stroll on our jogging path or let loose at our sprawling, landscaped playground.





Actual Photo

## ALL WITHIN REACH

From unforgettable outdoor moments to memorable occasions inside – our indoor amenities offer the ideal settings for special and more intimate chapters for anyone’s story. Whether you’re reaching for grand milestones at the private clubhouse or reaching for your best shape in our fully-equipped gym, rest assured there’s room here to create more memories for the life you love living.



Artist's Illustration

GOOD TASTE  
LIVES HERE



32 Sanson is a testament to good taste figuratively and literally. Here, residents and guests will find themselves a few paces away from everyday conveniences and moments of leisure – that’s the 32 Sanson Way.





# CREATE YOUR NEW CHAPTER IN THE 32 SANSON STORY

THE SILLION AT 32 SANSON

Live the chapters of your life and complete your story here at 32 Sanson. Be part of Rockwell's premiere mid-rise garden community at the heart of Cebu and find a home of unique firsts for you and your family.



Artist's Illustration

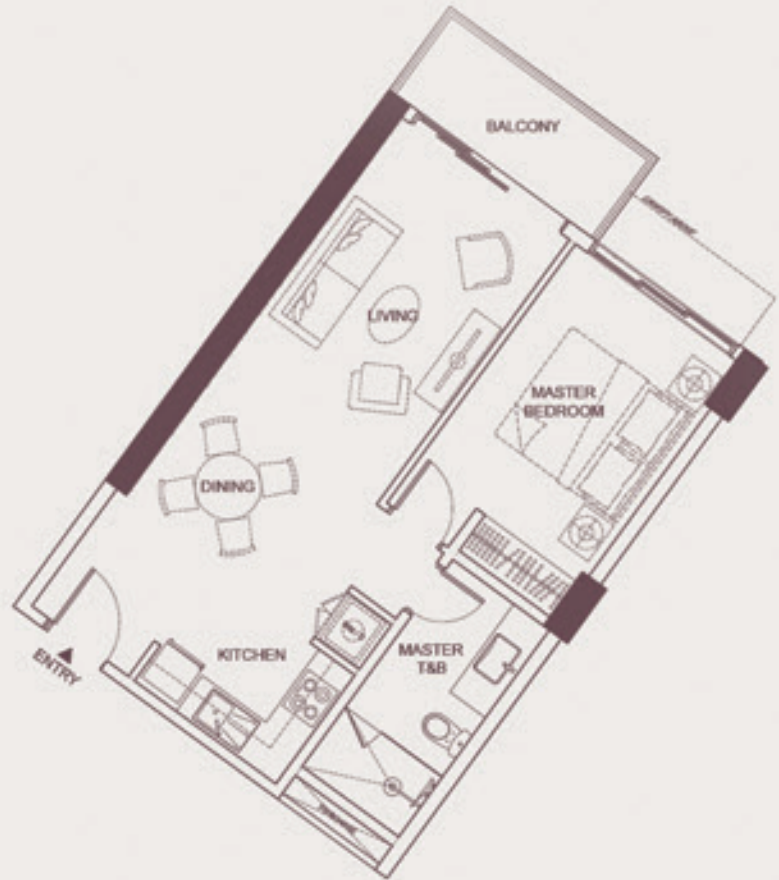


ONE  
BEDROOM  
TYPICAL  
UNIT  
CUT 1 (56SQM)

Discover your own sanctuary away from the city. The 1-bedroom unit is a highly personalized space where function is in perfect harmony with form. Enjoy ample room and homey comforts with timeless flair to suit all your needs.



UNIT D



Area:	
Living / Dining /Den	23 sm
Kitchen	7 sm
Master Bedroom	14 sm
Master T&B	7 sm
Balcony	5 sm
<hr/>	
Total Area:	56 sm
<hr/>	
Levels:	2 <sup>nd</sup> - 6 <sup>th</sup>

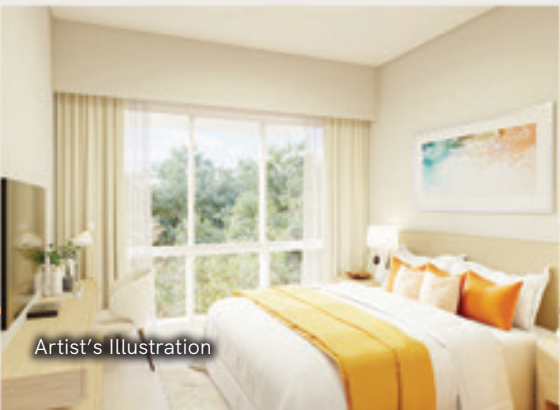
UNIT C



Area:	
Living / Dining /Den	33 sm
Kitchen	5 sm
Master Bedroom	15 sm
Master T&B	8 sm
Pocket Garden	6 sm
<hr/>	
Total Area:	67 sm
<hr/>	
Levels:	1 <sup>st</sup>

ONE  
BEDROOM  
GARDEN  
UNIT  
CUT 2 (67SQM)

The second unit cut for the 1-bedroom is as comfortable as it is inviting - the perfect personal space for those looking to enjoy the finer points of living outside the city on their own terms.





TWO  
BEDROOM  
UNIT  
93SQM

Great beginnings await at our two-bedroom suites. These spacious units are an ideal place for you and your kids to live in a safe and open environment while being close to state-of-the-art amenities and the best the city has to offer.



Artist's Illustration



Artist's Illustration

UNIT H

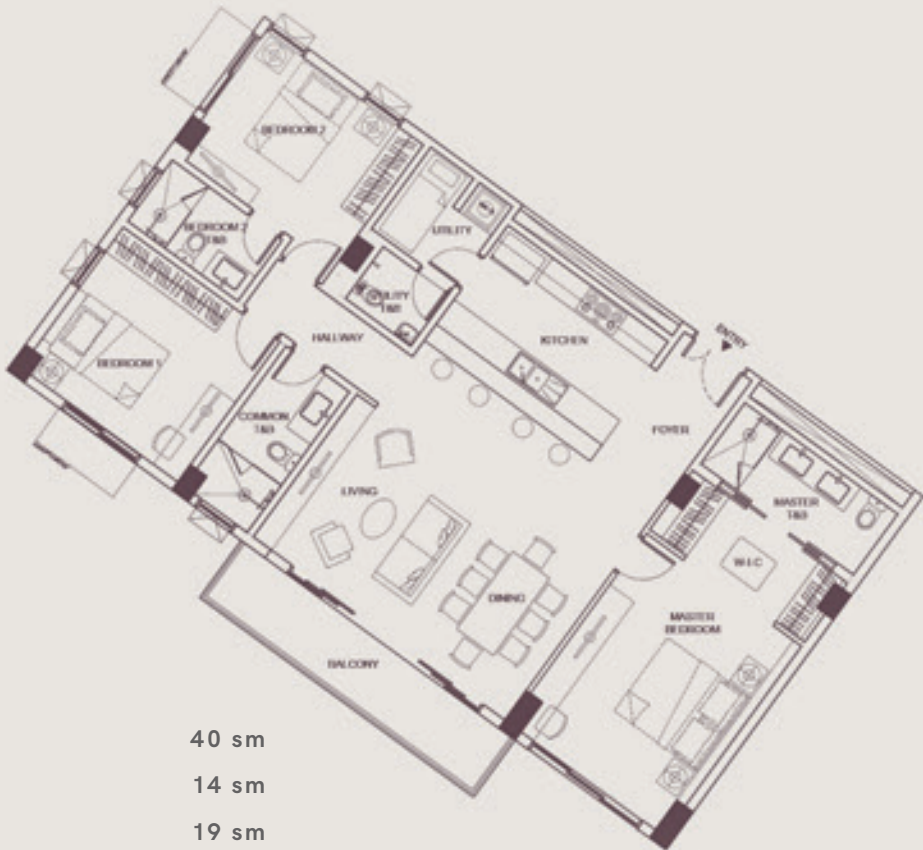


Area:	
Living / Dining	28 sm
Kitchen	7 sm
Master Bedroom	13 sm
Master T&B	5 sm
Walk-In Closet	3 sm
Bedroom 1	14 sm
Common T&B	5 sm
Utility	4 sm
Utility T&B	2 sm
Hallway	6 sm
Balcony	6 sm

Total Area: 93 sm

Levels: 2<sup>nd</sup> - 6<sup>th</sup>

UNIT B



Area:	
Foyer / Living / Dining	40 sm
Kitchen	14 sm
Master Bedroom	19 sm
Master T&B	9sm
Walk-In Closet	6 sm
Bedroom 1	15 sm
Common T&B	16 sm
Bedroom 2	14 sm
Bedroom 2 T&B	5 sm
Utility	5 sm
Utility T&B	3 sm
Hallways	4 sm
Balcony	9 sm

Total Area: 149 sm

Levels: 2<sup>nd</sup> - 6<sup>th</sup>

THREE  
BEDROOM  
UNIT  
149SQM

An escape from the city and a comfortable space fit for any family – welcome to our three-bedroom suites. Here anyone can enjoy living in comfort and safety with enough room for any kind of lifestyle.

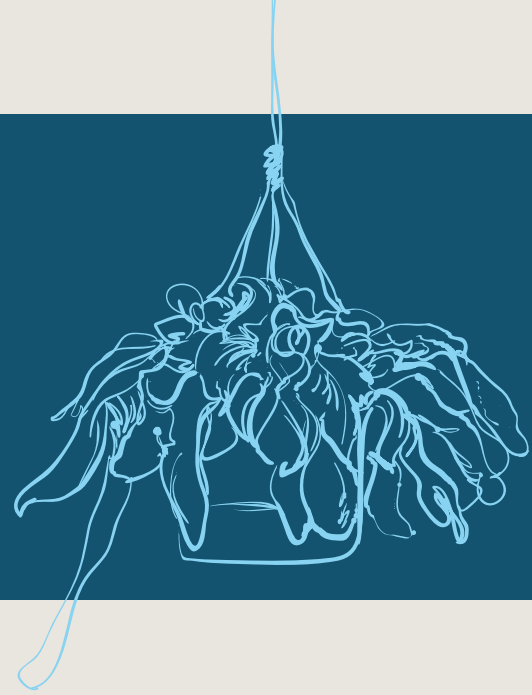


Actual Photo



Actual Photo





## UNIT FINISHES

- Solid-core, wood panel main entry door
- Wood-like tiles for Living, Dining, and Bedrooms
- Homogenous Tiles for Toilet & Bath, Balcony, Maid's quarters/ Utility room and Kitchen
- Painted walls, under slab soffit and ceiling
- Ducco painted bedroom and Toilet & Bath doors
- Tempered glass enclosed shower area
- Lavatory on natural stone countertop
- Water closet
- Rangehood and cooktop
- Laminated modular cabinet system with natural stone countertop and stainless steel sink for kitchen
- Laminated closets for bedrooms
- Provision for voice, data and cable TV connection
- VRF Air Conditioning System



Artist's Illustration



BUILDING  
FEATURES

- Secure, gated community
- Five residential and one parking level
- Two high-speed elevators  
(1 passenger, 1 service)
- Automatic Fire Detection and Alarm System
- 100% standby emergency power
- 3-day back-up water supply
- Parking level equipped with ventilation
- CCTV monitoring systems in strategic common areas
- Exclusive drop-off bay



Actual Photo



Project Team:		
Architecture	:	Gallego Architects
Interior Design	:	Erfe Associates & Partners
Structural Design	:	Sy2 + Associates, Inc.
MEPF Design	:	Meinhardt Philippines, Inc.
Feng Shui	:	Dr. Andy Tan



A property developed by  ROCKWELL LAND

Visit our model unit at  
Sanson Road, Lahug, Cebu City  
or call 0917-599-ROCK  
[www.32sansonbyrockwell.com](http://www.32sansonbyrockwell.com)

© September 2021

**DHSUD LS No. R07-21-032**  
DHSUD CVR AA-2021/04-691  
Completion Date: August 2024  
32 Sanson Road, Lahug, Cebu City